



DYNAMIC ABUTMENT® SOLUTIONS is the brand that encompasses all the products designed by the R&D center of Talladium España to provide solutions that solve the problems of incorrect positioning of implants and improves the aesthetics and function of the prosthesis.

Over ten years ago with the launch of Dynamic Abutment®, which has been successfully used in more than 500.000 cases in several countries, Dynamic Abutment® Solutions has become a clear leader in the market for dental angled abutments.

Dynamic Abutment® Solutions presents new developments with our own technology applied to the digital design field. We developed a wide portfolio of products as part of a complete system for Cad-cam. This portfolio includes all digital resources to resolve the complexity of angles in Cad-cam and allow angle corrections up to 45°.

Innovation and quality of our products are our main objectives to meet the challenges of the sector and our clients.



Graphenano Dental came into being as a result of own studies on the reinforcement of polymer matrices, becoming the pioneer company in incorporating graphene nanotechnology in dentistry in order to meet the needs of the dental sector.

Since its creation, it has sought to obtain a new material with new properties that is versatile, comfortable in terms of workability, precise and long-lasting, as well as offering good structural stability and being biodynamic and biocompatible. Thanks to graphene, and more specifically to resins doped with this nano-material, the company has achieved the market launch of its first product: The G-CAM disk for milling using a CAD/CAM system.



# G-DAS SYSTEM



DYNAMIC ABUTMENT® SOLUTIONS  
das@dynamicabutment.com

Virginia Woolf, 17  
25002 Lleida (Spain)  
t. (+34) 973 289 580

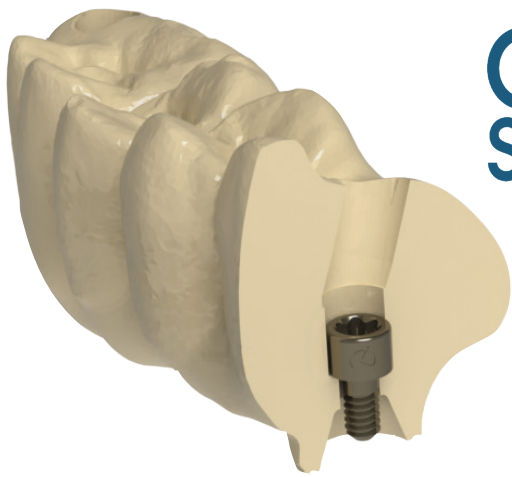
dynamicabutment.com



GRAPHENANO DENTAL  
info@graphenodental.com

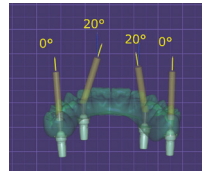
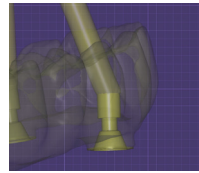
Polígono Industrial Táctica. Calle 2, n.º 1  
46980 Paterna, Valencia (Spain)  
t. (+34) 965 108 102

graphenodental.com

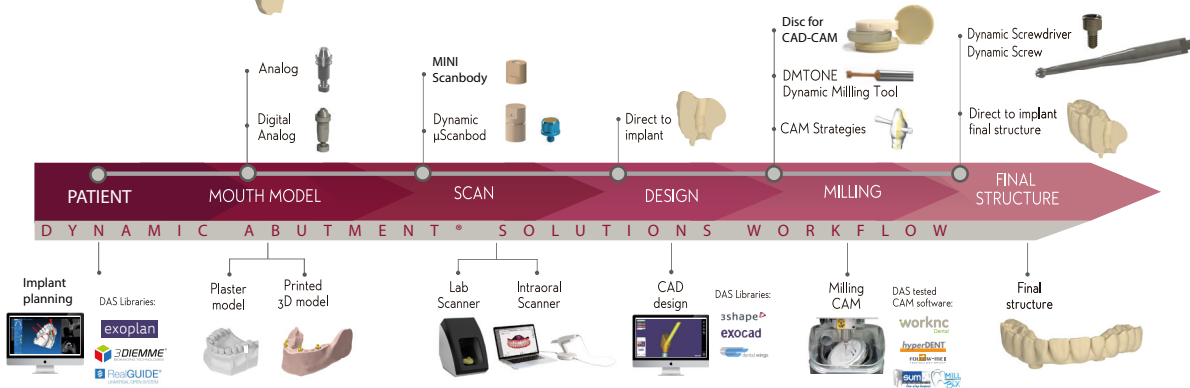


# G-DAS SYSTEM

GDAS-SYSTEM allows you to work direct-to-implant on Nobel Biocare Multi-Unit with the Dynamic Abutment® Solutions libraries and the angulated system.



GDAS SYSTEM library:  
DAS\_G\_0025



## SSC-START PACK

- G-DAS screws (12 units)  
Ref. 41.314.048.33-2
- Dynamic Screwdriver (1 unit)  
Ref. 43.624.201.01-2 (24mm)
- Dynamic µScanbody (4 units)  
Ref. 52.408.112.01-2
- Dynamic µScanbody Adaptor (4 units)  
Ref. 50.313.025.02-2
- Screwdriver SIO (1 unit)  
Ref. 43.620.411.01-2
- Digital Analog (4 units)  
Ref. 34.613.025.01-2
- G-DAS LIBRARY (1 unit)
- G-Cam monochroma A1-20mm Disc (1unit)  
Ref. PT00195

## ASC-START PACK

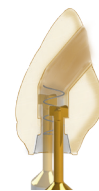
- G-DAS screws (12 units)  
Ref. 41.314.048.33-2
- Dynamic Screwdriver (1 unit)  
Ref. 43.624.201.01-2 (24mm)
- Dynamic µScanbody (4 units)  
Ref. 52.408.112.01-2
- Dynamic µScanbody Adaptor (4 units)  
Ref. 50.313.025.02-2
- Screwdriver SIO (1 unit)  
Ref. 43.620.411.01-2
- DMTone (1 unit)  
Ref. 33.390.716.01-2 (Shank Ø 3)  
or  
Ref. 33.490.716.01-2 (Shank Ø 4)  
or  
Ref. 33.690.716.01-2 (Shank Ø 6)
- G-DAS LIBRARY (1 unit)
- G-Cam monochroma A1-20mm Disc (1unit)  
Ref. PT00195



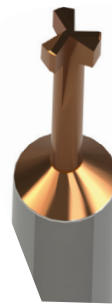
**STEP 1**  
Crown with pre drill.



**STEP 2**  
Crown with Angled channel.



**STEP 3**  
Crown with Dynamic Milling Tool. Milling the screw seat and increasing the diameter of the straight channel.



## DMTONE DYNAMIC MILLING TOOL

Precision milling tool. In the screwed angled structure direct to implant, it is used to mill the screw seating and to increase the internal diameter of the straight channel.

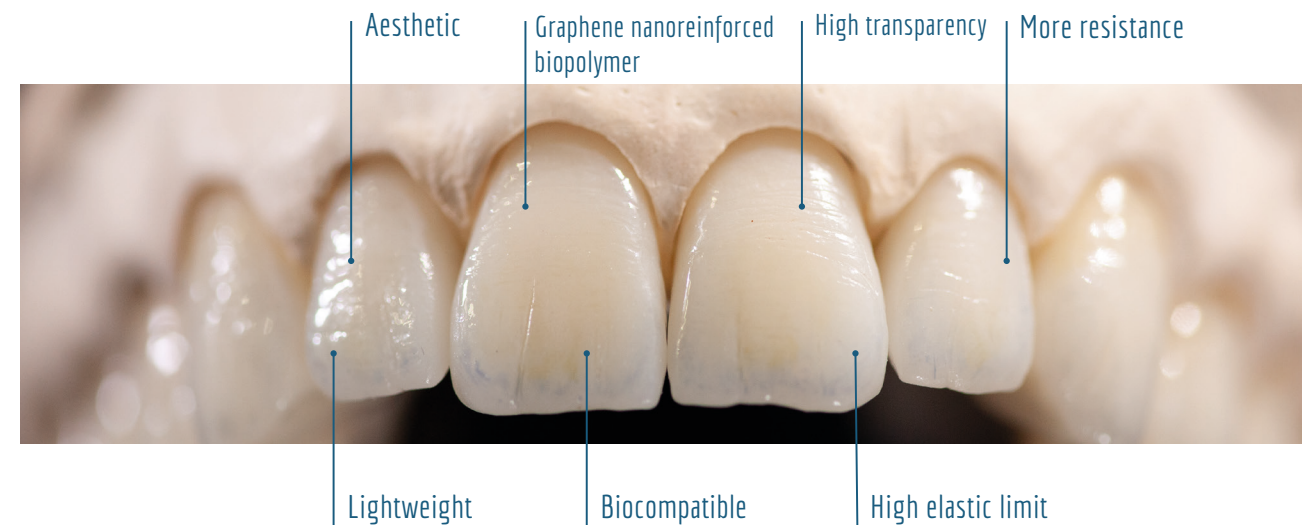
## G-CAM Graphene nanoreinforced biopolymer disc for CAD/CAM drilling



## Material properties

Elastic modulus (1) 3200 ± 7% MPa	Bending strength (1): 140 ± 7% MPa	Surface hardness (2): 88 Shore	Water absorption (1): 4 µg/mm <sup>3</sup>	Residual monomer (1): <0,004 %
--------------------------------------	---------------------------------------	-----------------------------------	---	-----------------------------------

(1) UNE-EN ISO 20795-1: 2013 | (2) Internal method



## G-CAM work process

