

## Compatible with - *Compatible con* NEODENT

### Smart HE - NEODENT



Platform		Non-Engaging	Engaging	Screw	Analog
Plataforma		Rotatorio	No Rotatorio	Tornillo	Réplica
NP	Plastic	PD3UCS33BR/P	--	TPDH18	--
	Co-Cr/Cr-Co	PD3UCS33BR/CC	--	TPDH18	--
	Tilite	PD3UCS41/T	PD3UCH41/T	TPDH2L70	---*
	Plastic	PD3UCS41/P	PD3UCH41/P	TPDH2L70	---*
	Co-Cr/Cr-Co	PD3UCS41/CC	PD3UCH41/CC	TPDH2L70	---*
WP	Plastic	PD3UCS51BR/P	PD3UCH51BR/P	TPDH25	--
	Co-Cr/Cr-Co	PD3UCS51BR/CC	--	TPDH25	--



	Hex.	h.
NP	2,40	0,70
RP	2,70	0,70
WP	3,40	0,70

\*Use TPDH2L6 screw for original analog

\*Usar tornillo TPDH2L6 para réplica original

## Compatible with - *Compatible con* SIGNO VINCES

### Duo - SIGNO VINCES



Platform		Non-Engaging	Engaging	Screw	Analog
Plataforma		Rotatorio	No Rotatorio	Tornillo	Réplica
NP	Plastic	PD3UCS33BR/P	PD3UCH33BR/P	TPDH18L65	---
	Co-Cr/Cr-Co	PD3UCS33BR/CC	PD3UCH33BR/CC	TPDH18L65	---
	Tilite	PD3UCS41/T	PD3UCH41/T	TPDH2L74	---*
RP	Plastic	PD3UCS41/P	PD3UCH41/P	TPDH2L74	---*
	Co-Cr/Cr-Co	PD3UCS41/CC	PD3UCH41/CC	TPDH2L74	---*



	Hex.	h.
NP	2,40	0,70
RP	2,70	0,70

\*Use TPDH2L6 screw for original analog

\*Usar tornillo TPDH2L6 para réplica original

### Inttegra - SIGNO VINCES



NP	Plastic	PD3UCS33BR/P	PD3UCH33BR/P	TPDH18L65	---
	Co-Cr/Cr-Co	PD3UCS33BR/CC	PD3UCH33BR/CC	TPDH18L65	---
	Tilite	PD3UCS41/T	PD3UCH41/T	TPDH2L74	---*
RP	Plastic	PD3UCS41/P	PD3UCH41/P	TPDH2L74	---*
	Co-Cr/Cr-Co	PD3UCS41/CC	PD3UCH41/CC	TPDH2L74	---*



	Hex.	h.
NP	2,40	0,70
RP	2,70	0,70

\*Use TPDH2L6 screw for original analog

\*Usar tornillo TPDH2L6 para réplica original

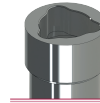
## Compatible with - SOUTHERN IMPLANTS

### Tri-Nex - SOUTHERN IMPLANTS



Platform		Non-Engaging	Engaging	Screw	Analog
Plataforma		Rotatorio	No Rotatorio	Tornillo	Réplica
Ø 3,5	Tilite	PD3RPLR35/T	PD3RPLT35/T	TPDH18L75	RRPL35
	Plastic	PD3RPLR35/P	PD3RPLT35/P	TPDH18L75	RRPL35
	Co-Cr/Gr-Co	PD3RPLR35/CC	PD3RPLT35/CC	TPDH18L75	RRPL35
Ø 4,3*	Tilite	PD3RPLR43/T	PD3RPLT43/T	TPDH2L82	RRPL43
	Plastic	PD3RPLR43/P	PD3RPLT43/P	TPDH2L82	RRPL43
	Co-Cr	PD3RPLR43/CC	PD3RPLT43/CC	TPDH2L82	RRPL43

\* Maximum angulation 20°  
\* Máxima angulación 20°

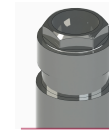


### External Hexagon *Hexágono Externo* - SOUTHERN IMPLANTS



Ø 3,4	Tilite	PD3UCS33/T	--	TPDH2L65	--
	Plastic	PD3UCS33/P	--	TPDH2L65	--
Ø 4,1	Tilite	PD3UCS41/T	PD3UCH41/T	TPDH2L6	RUC41
	Plastic	PD3UCS41/P	PD3UCH41/P	TPDH2L6	RUC41
	Co-Cr/Gr-Co	PD3UCS41/CC	PD3UCH41/CC	TPDH2L6	RUC41
Ø 5	Tilite	PD3UCS50/T	PD3UCH50/T	TPDH2	RUC50
	Plastic	PD3UCS50/P	PD3UCH50/P	TPDH2	RUC50
Ø 6	Tilite	PD3UCS50/T*	PD3UCH50/T*	TPDH2	--
	Plastic	PD3UCS50/P*	PD3UCH50/P*	TPDH2	--

\*Platform Switch

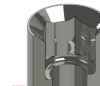


	Hex.	h.
NP	2,55	0,70
RP	2,70	0,70
WP	2,70	0,70

### Internal Hexagon *Hexágono Interno* - SOUTHERN IMPLANTS



Universal	Tilite	PD3ZIMRNP/T	PD3ZIMHNP/T	TPDH17L71	RZIM35
	Plastic	PD3ZIMRNP/P	PD3ZIMHNP/P	TPDH17L71	RZIM35
	Co-Cr/Gr-Co	PD3ZIMRNP/CC	PD3ZIMHNP/CC	TPDH17L71	RZIM35



### Compact Conical - SOUTHERN IMPLANTS



Ø 4,8	Tilite	PD3CO41/T	---	TPDH14	RMU48
	Plastic	PD3CO41/P	---	TPDH14	RMU48
	Co-Cr/Gr-Co	PD3CO41/CC	---	TPDH14	RMU48



## Compatible with - *Compatible con* SYSTHEX

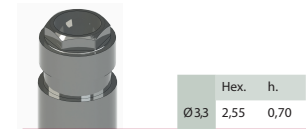
### Classic-ci / Estetic-ci - SYSTHEX

Platform <i>Plataforma</i>		Non-Engaging	Engaging	Screw	Analog
		<i>Rotatorio</i>	<i>No Rotatorio</i>	<i>Tornillo</i>	<i>Réplica</i>
RP Ø 4,1	Tilite	PD3UCS41/T	PD3UCH41/T	TPDH2L74	---
	Plastic	PD3UCS41/P	PD3UCH41/P	TPDH2L74	---
	Co-Cr/ <i>Cr-Co</i>	PD3UCS41/CC	PD3UCH41/CC	TPDH2L74	---



### Fit-hex - SYSTHEX

Ø 3,3	Plastic	PD3UCS33BR/P	--	TPDH18	--
	Co-Cr/ <i>Cr-Co</i>	PD3UCS33BR/CC	--	TPDH18	--



### Classic Traditional- SYSTHEX

Ø 5	Plastic	PD3UCS51BR/P	PD3UCH51BR/P	TPDH25	--
	Co-Cr/ <i>Cr-Co</i>	PD3UCS51BR/CC	--	TPDH25	--

